

**SNOWMOBILE DEALERS**  
**All 2014 ~ 2018 SRViper and 2018 SRVenture Models**  
**PRODUCT UPDATE — ECU REPROGRAMMING**  
**DECEMBER 2018**



**S18-067**

**Introduction**

**Problem:** There have been enhancements to the starting calibrations of the ECU to improve starting performance since the last software update (S16-080 or S17-080).

**Cause:** Ongoing model improvements with the ECU start-up calibration for the current model.

**Remedy:** Re-flash the stock ECU with new programming parameters provided by Yamaha.

**IMPORTANT:** This bulletin renders the procedures in bulletins S16-080 and S17-080 obsolete. **Therefore S16-080 and S17-080 are expired.**

Make sure your customer understands once the snowmobile ECU re-flash is completed, it cannot be reverted to its original setting.

This modification is only possible for units with a stock OEM ECU.

**Affected Units** (part 1, 2014-2016 models)

MY	Model	Sales Name	PID Range	Model	Sales Name	PID Range
2014	SR10REB	SRViper	8JP00 0000213 ~ 0000487	SR10LEB	SRViper LTX	8JX00 0000111 ~ 0000870
	SR10RSEL, SR10RSER	SRViper RTX SE	8JW00 0000125 ~ 0000825	SR10LSEL, SR10LSER	SRViper LTX SE	8JY00 0000101 ~ 0001377
				SR10XSEL, SR10XSER	SRViper XTX SE	8JR00 0000111 ~ 0001694
2015	SR10RDFB, SR10RDFR	SRViper R-TX DX	8JP20 0000101 ~ 0000425	SR10SDFB, SR10SDFR	SRViper S-TX DX	8KV10 0000101 ~ 0000683
	SR10RSFL, SR10RSFR	SRViper R-TX SE	8JW20 0000129 ~ 0000411	SR10XSFL, SR10XSFR	SRViper X-TX SE	8JR30 0000108 ~ 0000820
	SR10RLF0	SRViper R-TX LE 1.25	8KN10 0000108 ~ 0000156	SR10XLFO	SRViper X-TX LE	8KR10 0000108 ~ 0000243
	SR10RLF1	SRViper R-TX LE 1.7	8KN30 0000111 ~ 0000198	SR10M53FB	SRViper M-TX 153	8KG10 0000101 ~ 0000498
	SR10LDFB, SR10LDFR	SRViper L-TX DX	8JX20 0000101 ~ 0000984	SR10M53SFL, SR10M53SFR	SRViper M-TX SE 153	8KS10 0000101 ~ 0000433
	SR10LSFL, SR10LSFR	SRViper L-TX SE	8JY20 0000301 ~ 0001017	SR10M62SFL, SR10M62SFR	SRViper M-TX SE 162	8KT10 0000101 ~ 0000595
	SR10LSFO	SRViper L-TX LE 1.25	8JY20 0000102 ~ 0001049		SRViper M-TX LE 162	8KU10 0000101 ~ 0000296
SR10LLFO	SRViper L-TX LE 1.75	8KP10 0000102 ~ 0000210	SR10M62LFO			
2016	SR10RDGB, SR10RDGR	SRViper R-TX DX	8JP30 0000102 ~ 0000333	SR10XSGL, SR10XSGR	SRViper X-TX SE	8JR60 0000102 ~ 0000559
	SR10RSG1, SR10RSGR	SRViper R-TX SE	8JW40 0000104 ~ 0000374	SR10XLGL, SR10XLGW	SRViper X-TX LE	8LH10 0000101 ~ 0000245
	SR10RLGL, SR10RLGW	SRViper R-TX LE	8KN40 0000103 ~ 0000201	SR10MS41GL, SR10MS41GR	SRViper M-TX SE 141	8LK10 0000101 ~ 0000322
	SR10LDGB, SR10LDGR	SRViper L-TX DX	8JX30 0000122 ~ 0000750	SR10M53GB, SR10M53GR	SRViper M-TX 153	8KG30 0000101 ~ 0000297
	SR10LSGL, SR10LSGR	SRViper L-TX SE	8JY40 0000101 ~ 0000630	SR10MS53GL, SR10MS53GR	SRViper M-TX SE 153	8KS30 0000101 ~ 0000209
	SR10LLGW	SRViper L-TX LE	8KP30 0000199 ~ 0000333	SR10ML53GL, SR10ML53GW	SRViper M-TX LE 153	8LL10 0000104 ~ 0000171
	SR1ELLGL	SRViper L-TX LE 1.25	8KP50 0000118 ~ 0000287	SR10M62GB, SR10M62GR	SRViper M-TX 162	8LM10 0000101 ~ 0000178
	SR10SD37GR	SRViper S-TX DX 137	8LJ10 0000111 ~ 0000390	SR10MS62GL, SR10MS62GR	SRViper M-TX SE 162	8KT30 0000101 ~ 0000211
	SR10SD46GB	SRViper S-TX DX 146	8LN10 0000101 ~ 0000418	SR10ML62GW	SRViper M-TX LE 162	8KU30 0000102 ~ 0000130
			SR1EML62GL	SRViper M-TX LE 162	8KU60 0000101 ~ 0000176	

(More on next page.)



Route to:	Service	Parts
	Warranty	Sales

©2018 Yamaha Motor Canada Ltd.



## Affected Units (part 2, 2017-2018 models)

MY	Model	Sales Name	PID Range	Model	Sales Name	PID Range
2017	SR10RDHB	SRViper R-TX DX	8JP40 0000101 ~ 0000171	SR10SD37HL	SRViper S-TX DX 137	8LJ30 0000103 ~ 0000180
	SR10RSHL	SRViper R-TX SE	8JW50 0000101 ~ 0000200	SR10SD46HB	SRViper S-TX DX 146	8LN30 0000106 ~ 0000155
	SR10LDHB	SRViper L-TX DX	8JX40 0000102 ~ 0000211	SR10XS41HL	SRViper X-TX SE 141	8JR90 0000102 ~ 0000250
	SR10LLHL	SRViper L-TX LE	8KP60 0000101 ~ 0000160	SR10BLHL	SRViper B-TX LE 153	8LH30 0000101 ~ 0000159
	SR10LSHL, SR10LSHR	SRViper L-TX SE	8JY50 0000101 ~ 0000252	SR10MS53HL	SRViper M-TX SE 153	8KS50 0000101 ~ 0000134
2018	SR1NRJB	SRViper R-TX	8JP50 0000101 ~ 0000195	SR1NXS JL	SRViper X-TX SE 141	8JRC0 0000102 ~ 0000153
	SR1NLDJL	SRViper L-TX DX	8JX50 0000101 ~ 0000246			
	SR1NLJB	SRViper L-TX	8JY60 0000104 ~ 0000292	SRT1NJL	SRVenture DX	8MU10 0000138 ~ 0000346
	SR1NLLJW	SRViper L-TX LE 50th	8KP70 0000101 ~ 0000139			

### Dealer Action Summary

#### IMPORTANT: Before proceeding:

1. Check that the unit is included in the PID Range under the **Affected Units** section (parts 1 and 2).
2. Also check that the unit has not already been inspected or modified; see **Unit Identification** section.

**Parts Required:** No. However, the Y.S.D.T. (Yamaha Snowmobile Diagnostic Tool) is required to install the updated ECU program.

**New Units:** Install the updated ECU program in all units being prepare for delivery.

**Sold Units:** Install the updated ECU program in all units in being serviced at your dealership.

### Unit Identification

A modified unit can be identified two ways:

1. Check for the status of the code **S867** in YDS > Service > Service Transaction > Unit Status using the VIN (frame number) located on the tunnel:

Status: **Pending** = **MODIFICATION REQUIRED.**

Status: **Completed** = unit has been modified and no action is required as per this bulletin.

2. An indication of the updated hardware-programmed part number "0730-342" or "0730-343" or "0730-344" displayed in the ECU ID screen of the Y.S.D.T.

(Programs are based on the unit sprocket type: 9-tooth, 8-tooth or 7-tooth drive sprockets.)

You can always email the Dealer Service Support Group (DSSG) or your Territory Service Manager (TSM) if you are unsure.

**dealerservicesupport@yamaha-motor.ca**

## Service Procedures

### IMPORTANT NOTES:

Reprogramming the ECU will take time, and any interruption in the process may cause the ECU to malfunction. Do not touch the keyboard or the mouse during the process.

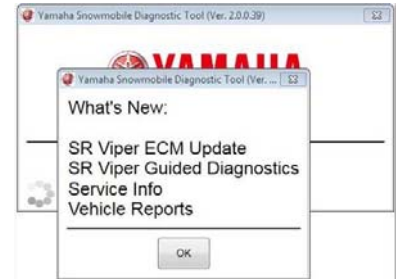
**Snowmobile:** Ensure the battery is fully charged.

**NOTICE:** Do not connect the Power Connections to anything other than a 12-volt battery. Use of External Power Supply or Battery Charger will result in Damage to the ECU and the computer.

**Computer:** Turn off your computer's screensaver function before reprogramming. Also, do not use low-power mode or turn off your computer while reprogramming.

**Y.S.D.T.:** Y.S.D.T. will prompt you to accept and load the latest software upon connection with the internet.

(Adjacent illustration is an example of the prompt screen which may change based on what's new and what has been loaded in your computer.)



1. Connect the unit to Y.S.D.T.
2. Refer to the "ECU UPDATE Screen" in the Y.S.D.T. User Guide on page 17 (available through your on-line YDS Tech Library).
3. The YSDT must be updated to the latest software, version 2.0.0.114 or later, to be able to perform the ECU re-flash.

### SERVICE TIP:

Always ensure a battery is fully charged before attempting any service procedure, including this modification.

After a successful modification, always check and clear error codes.

## Warranty Procedure

1. This modification is authorized for all affected and unmodified units regardless of ownership or warranty status but this bulletin (and any compensation related to performing the procedure) **EXPIRES on December 31, 2019** (submit claims before that date.)
2. You will be reimbursed a labour allowance only.

Service Bulletin Code	Labour Allowance
S867	0.2 hour