

SNOWMOBILE DEALERS

All 2014 ~ 2016 SRViper Models

PRODUCT UPDATE — ECU REPROGRAMMING

NOVEMBER 2017

**Extending Expiry Date to
December 31, 2021**



S16-080A

Introduction

Problem: Starter idler gear or starter motor may break during cold engine starting.

Cause: The ECU is not equipped with a kick back control feature. Under certain starting conditions the fuel injection mapping may allow a misfire, causing the engine to rotate backward and damaging starting system components.

Remedy: Reflash the stock ECU with new programming parameters provided by Yamaha.

IMPORTANT: Make sure your customer understands once the snowmobile ECU re-flash is completed, it cannot be reverted to its original setting.

This modification is only possible for units with a stock OEM ECU.

Affected Units

Model Year	Model	Sales Name	PID Range
2014	SR10REB	SRViper	8JP00 0000213 ~ 0000487
	SR10RSEL, SR10RSER	SRViper RTX SE	8JW00 0000125 ~ 0000825
	SR10LEB	SRViper LTX	8JX00 0000111 ~ 0000870
	SR10LSEL, SR10LSER	SRViper LTX SE	8JY00 0000101 ~ 0001377
2015	SR10XSEL, SR10XSER	SRViper XTX SE	8JR00 0000111 ~ 0001694
	SR10RDFB, SR10RDFR	SRViper R-TX DX	8JP20 0000101 ~ 0000425
	SR10RSFL, SR10RSFR	SRViper R-TX SE	8JW20 0000129 ~ 0000411
	SR10RLF0	SRViper R-TX LE 1.25	8KN10 0000108 ~ 0000156
	SR10RLF1	SRViper R-TX LE 1.7	8KN30 0000111 ~ 0000198
	SR10LDFB, SR10LDFR	SRViper L-TX DX	8JX20 0000101 ~ 0000984
	SR10LSFL, SR10LSFR	SRViper L-TX SE	8JY20 0000301 ~ 0001017
	SR10LSF0	SRViper L-TX LE 1.25	8JY20 0000102 ~ 0001049
	SR10LLF0	SRViper L-TX LE 1.75	8KP10 0000102 ~ 0000210
	SR10SDFB, SR10SDFR	SRViper S-TX DX	8KV10 0000101 ~ 0000683
	SR10XSFL, SR10XSFR	SRViper X-TX SE	8JR30 0000108 ~ 0000820
	SR10XLF0	SRViper X-TX LE	8KR10 0000108 ~ 0000243
	SR10M53FB	SRViper M-TX 153	8KG10 0000101 ~ 0000498
	SR10M53SFL, SR10M53SFR	SRViper M-TX SE 153	8KS10 0000101 ~ 0000433
	SR10M62SFL, SR10M62SFR	SRViper M-TX SE 162	8KT10 0000101 ~ 0000595
	SR10M62LFO	SRViper M-TX LE 162	8KU10 0000101 ~ 0000296
2016	SR10RDGB, SR10RDGR	SRViper R-TX DX	8JP30 0000102 ~ 0000333
	SR10RSGL, SR10RSGR	SRViper R-TX SE	8JW40 0000104 ~ 0000374
	SR10RLGL, SR10RLGW	SRViper R-TX LE	8KN40 0000103 ~ 0000201
	SR10LDGB, SR10LDGR	SRViper L-TX DX	8JX30 0000122 ~ 0000750
	SR10LSGL, SR10LSGR	SRViper L-TX SE	8JY40 0000101 ~ 0000630
	SR10LLGW	SRViper L-TX LE	8KP30 0000199 ~ 0000333
	SR1ELLGL	SRViper L-TX LE 1.25	8KP50 0000118 ~ 0000287
	SR10SD37GR	SRViper S-TX DX 137	8LJ10 0000111 ~ 0000390
	SR10SD46GB	SRViper S-TX DX 146	8LN10 0000101 ~ 0000418
	SR10XSGL, SR10XSGR	SRViper X-TX SE	8JR60 0000102 ~ 0000559
	SR10XLGL, SR10XLGW	SRViper X-TX LE	8LH10 0000101 ~ 0000245
	SR10MS41GL, SR10MS41GR	SRViper M-TX SE 141	8LK10 0000101 ~ 0000322
	SR10M53GB, SR10M53GR	SRViper M-TX 153	8KG30 0000101 ~ 0000297
	SR10M53GL, SR10M53GR	SRViper M-TX SE 153	8KS30 0000101 ~ 0000209
	SR10ML53GL, SR10ML53GW	SRViper M-TX LE 153	8LL10 0000104 ~ 0000171
	SR10M62GB, SR10M62GR	SRViper M-TX 162	8LM10 0000101 ~ 0000178
	SR10MS62GL, SR10MS62GR	SRViper M-TX SE 162	8KT30 0000101 ~ 0000211
	SR10ML62GW	SRViper M-TX LE 162	8KU30 0000102 ~ 0000130
SR1EML62GL	SRViper M-TX LE 162	8KU60 0000101 ~ 0000176	



Route to:	Service	Parts
	Warranty	Sales

©2017 Yamaha Motor Canada Ltd.



Dealer Action Summary

IMPORTANT: Before proceeding:

1. Check that the unit is included in the PID Range under the **Affected Units** section.
2. Also check that the unit has not already been inspected or modified; see **Unit Identification** section.

Parts Required: No. However the Y.S.D.T. (Yamaha Snowmobile Diagnostic Tool) is required to install the updated ECU program.

New Units: Install the updated ECU program in all units being prepare for delivery.

Sold Units: Install the updated ECU program in all units in being serviced at your dealership.

Unit Identification

A modified unit can be identified two ways:

1. Check for the status of the code **S680** in YDS > Service > Service Transaction > Unit Status using the VIN (frame number) located on the tunnel:

Status: **Pending** = **MODIFICATION REQUIRED.**

Status: **Completed** = unit has been modified and no action is required as per this bulletin.

2. An indication of the hardware-programmed part number "0730-260" or "0730-261" or "0730-262" displayed in the ECU ID screen of the Y.S.D.T.

(Programs are based on the unit sprocket type: 7-tooth, 8-tooth or 9-tooth drive sprockets.)

You can always email the Dealer Service Support Group (DSSG) or your Territory Service Manager (TSM) if you are unsure.

dealerservicesupport@yamaha-motor.ca

Service Procedures

IMPORTANT NOTES:

Reprogramming the ECU will take time, and any interruption in the process may cause the ECU to malfunction. Do not touch the keyboard or the mouse during the process.

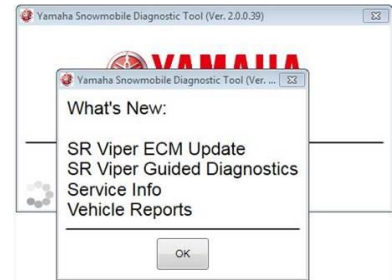
Snowmobile: Ensure the battery is fully charged.

NOTICE: Do not connect the Power Connections to anything other than a 12-volt battery. Use of External Power Supply or Battery Charger will result in Damage to the ECU and the computer.

Computer: Turn off your computer's screensaver function before reprogramming. Also, do not use low-power mode or turn off your computer while reprogramming.

Y.S.D.T.: Y.S.D.T. will prompt you to accept and load the latest software upon connection with the internet.

(Adjacent illustration is an example of the prompt screen which may change based on what's new and what has been loaded in your computer.)



1. Connect the unit to Y.S.D.T.
2. Refer to the "ECU UPDATE Screen" in the Y.S.D.T. User Guide on page 17 (available through your on-line YDS Tech Library).

SERVICE TIP:

Always ensure a battery is fully charged before attempting any service procedure, including this modification.

After a successful modification, always check and clear error codes.

Warranty Procedure

1. This modification is authorized for all affected and unmodified units regardless of ownership or warranty status but this bulletin (and any compensation related to performing the procedure) **EXPIRES on December 31, 2021** (submit claims before that date.)
2. You will be reimbursed a labour allowance only.

Service Bulletin Code	Labour Allowance
S680	0.2 hour